



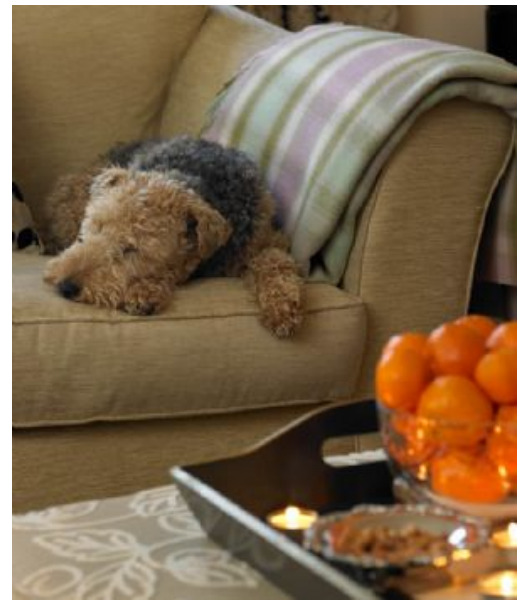
EMMA AND RICK CRANMORE (Feature: 2849)

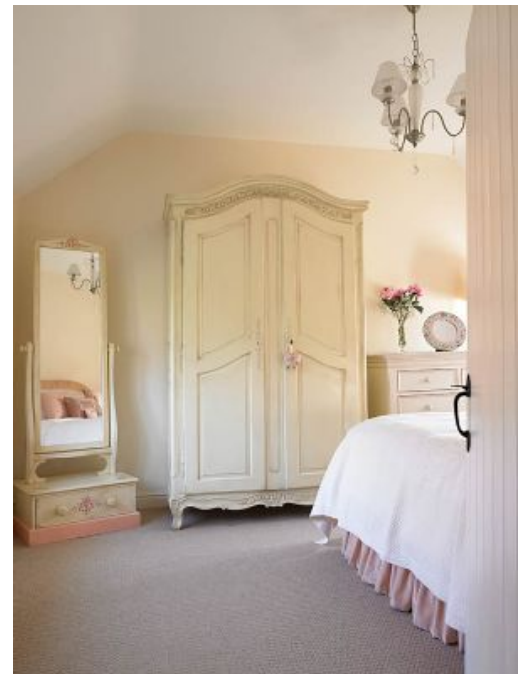
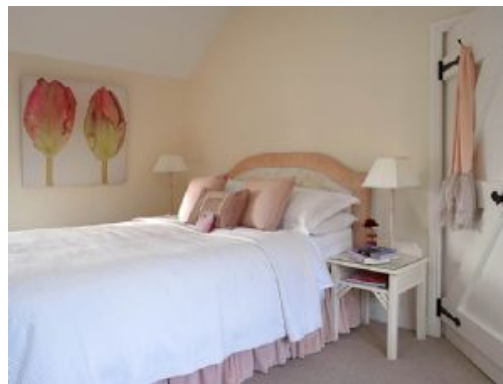
Emma and Rick Cranmore have indulged their love of antiques in this Old Post Office in Cheshire, a perfect venue for a traditional Christmas.

Location: Cheshire, UK

Photographer: Judi Goodwin

URL: <http://www.gapphotos.com/featuredetails.asp?featureref=2849>





SYNOPSIS

Emma Cranmore has never particularly liked low-beamed cottages. So her partner Rick was rather surprised when she arrived one evening enthusing about an old post office she had noticed on her way home. As the house had been recently renovated, including a revamped kitchen and bathroom, Rick took very little persuading that this could be an idyllic home. With magnolia walls throughout, their challenge has been to stamp their own style on what they have regarded as a blank canvas. There was no way that modern furniture could add the character to the place that they desired. So their approach has been to use antiques to add a sense of period style – and often at a price lower than their modern equivalent. But they opted for modern beds and sofas – a must for comfort. Two years after moving in, they are still tweaking the décor and adding colourful touches here and there. And the house has proved a perfect place to spend a traditional English Christmas.